



The ATTUNE Project

Website: www.attuneproject.com

TikTok: @theattuneproject

LinkedIn: ATTUNE Project

Instagram: @_theattuneproject_

X: @attuneproject

29/04/2024

12PM-1PM

Harsimran Sansoy: Harsimran.Sansoy@psych.ox.ac.uk

Dr Isabelle Butcher: Isabelle.butcher@psych.ox.ac.uk

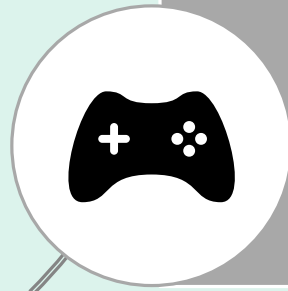
THE ATTUNE PROJECT

- Create a paradigm shift by harnessing the powerful potential of creative arts and participatory processes with young people
- Learn how multiple ACEs, diverse places & diverse identities shape pathways and outcomes for youth mental health
- Develop transformative arts-led interventions to reach young people and the systems around them

Key Questions

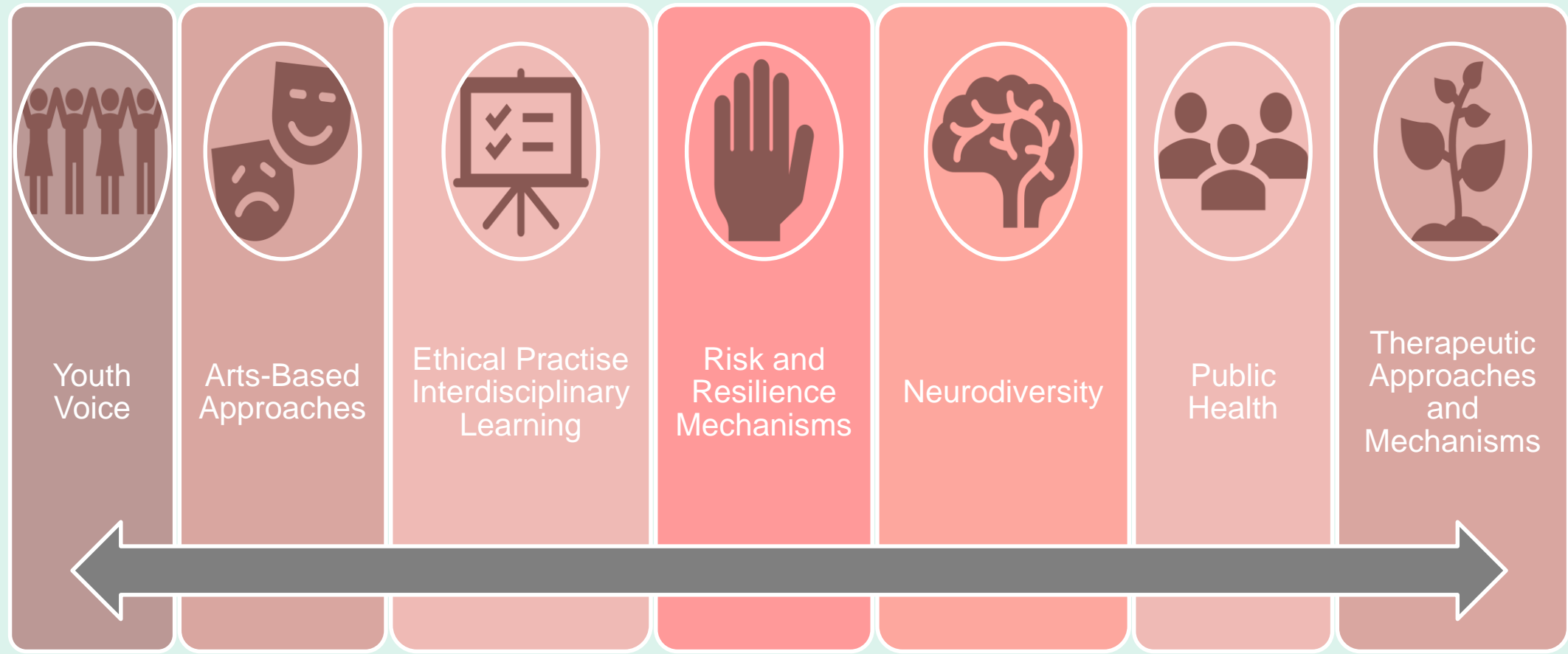


What are the psychological and geo-social-economic contextual mechanisms by which ACEs unfold to affect or safeguard the mental health and lives of YP (aged 10-24)?



Are co-designed, youth-informed public mental health, technological and clinical actions acceptable, feasible, beneficial for YP and a good use of resources?

ATTUNE VISION



ATTUNE ENGAGEMENT

Youth Voice

Leeds

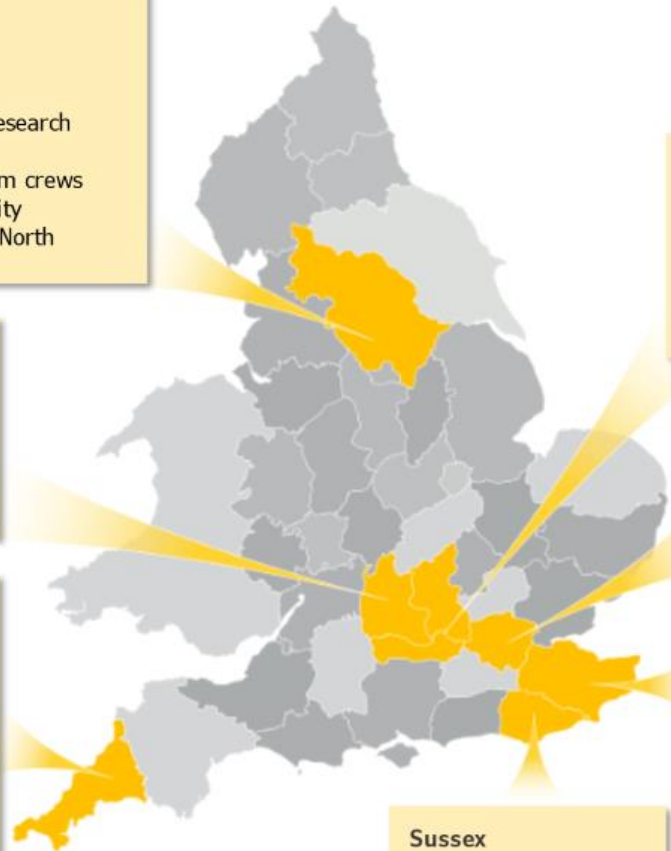
- YPAG
- NGOs
- Youth Research Board
- Local film crews
- University
- Inspire North

Oxfordshire

- YPAG
- Oxwell Schools
- Oxford NIHR ARC
- Local film crews
- University

Cornwall

- Young People Cornwall
- Sowenna Unit
- Speak Up Cornwall (YPAG)
- HeadStart Schools
- FE Colleges
- Local film crews
- University



Oxfordshire, Buckinghamshire, Berkshire (+ Gloucestershire Wiltshire, Liverpool)

- Oxwell Schools

London

- BLACKOUT
- Youth Troupe
- University

Kent

- YPAG
- Beacon School
- KRAN
- Local film crews
- University

Sussex

- MINDOUT

Work Packages

WP1 (Anna Mankee-Williams) –
Co-discovery
of Experience
as Evidence

WP3 (Siobhan Hugh Jones) –
Experience based
co-design of
public mental
health action on
ACEs

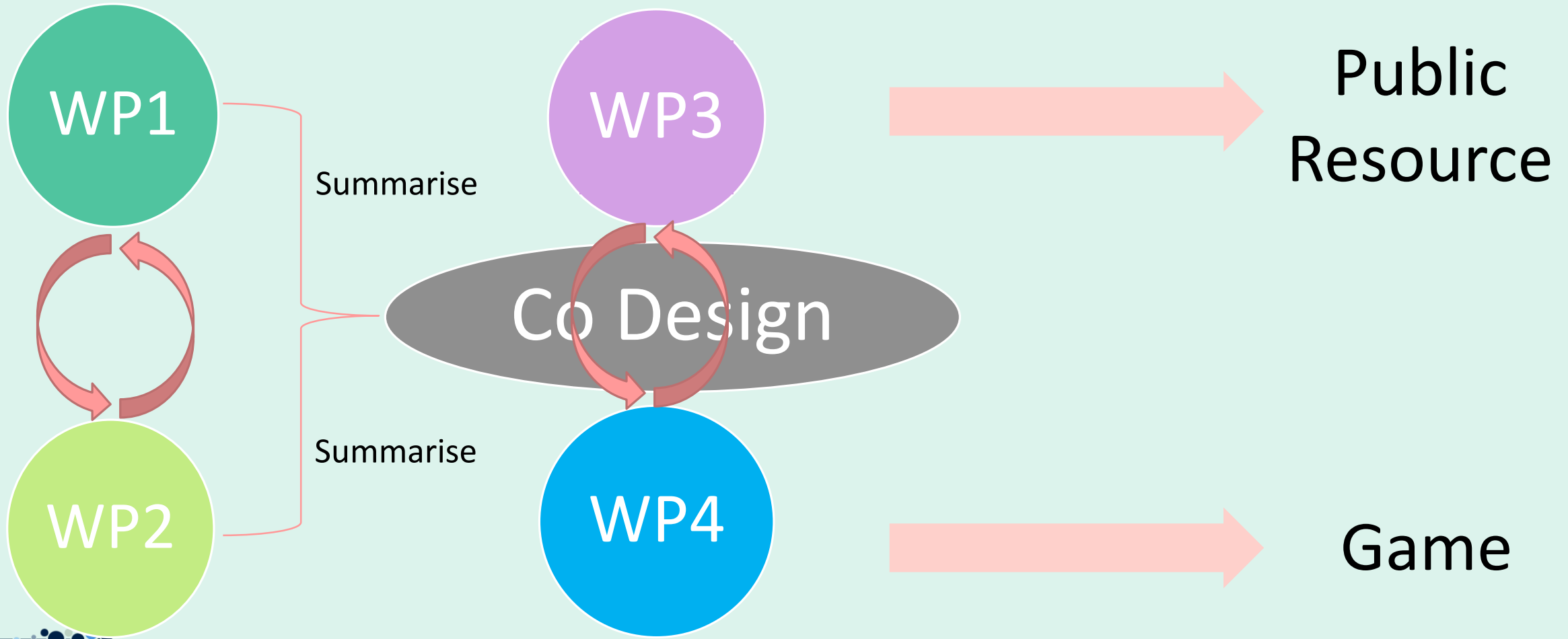
WP5 (Paul McCrone) –
Economic
Modelling

WP2 (Sania Shakoor) –
Modelling
Risk and
Resilience

WP4 (Eunice Ma) – Co-
design and
evaluation of
Digitised
Preventive
Intervention

WP6 (Kam Bhui) –
Learning
Dissemination
and Pathways to
Impact

ATTUNE Overview



WP1 Data Collection



1) Demographics, ACEs, MHWB, emotion regulation, support-seeking, empowerment

Online form filled on-site in the presence of/supported by ATTUNE Team member



2) Arts-based practice and key conversations

Facilitated by arts-based practitioners (Falmouth, Kent, Leeds, London, Oxford)



3) MHWB, emotion regulation, support-seeking, empowerment, open question on impact

Online form filled on-site in the presence of/supported by ATTUNE Team + online follow-ups every 6 months for 2y

ARTS-BASED WORKSHOPS



- Youth-led video recapping basics (e.g., “it’s not about being “good” at art”)
- Extensive trust building
- Safe, inclusive environment
- Agency-building environment
- Right to speak or pass
- Facilitators never the only person onsite
- Support in the case of triggering
- Space for young people to take a rest from group work
- Check-ins at the end of each session

DATA SPECIFICS



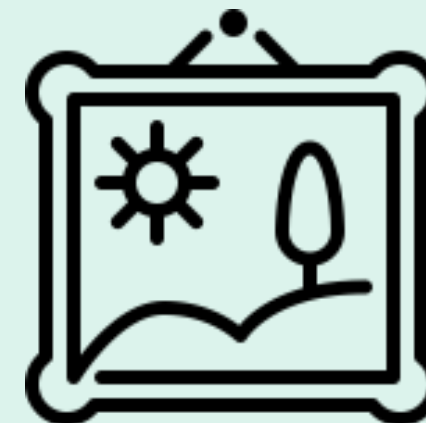
Survey
ID-labelled



Key conversations
transcribed and
de-identified



Video/audio
recordings kept
confidential



De-identified or
credited; shared
publicly w/ consent

When shared, care taken to
prevent reidentification

If credited/identifiable shared unlinked
to other study data

WP2 – Modelling Risk and Resilience

Access to Headstart, Reach, DASH and Oxwell datasets

Headstart cross sectional analyses complete

Initial descriptive analyses of data has begun for Reach and DASH

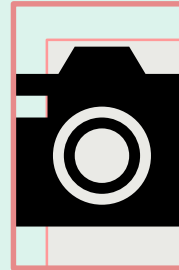
HeadStart Data Analysis

- ❑ For all intersectionality profiles, **ACEs were associated with higher average symptoms at baseline** (but not with a difference in the rate of change of time over time) compared to no ACEs
- ❑ Main effects of gender, SES, neurodivergence, and their interactions (intersectionality effects) were **not detected**
- ❑ **Overall:** Mental health problem **trajectories varied with the experience of ACEs**, with **variability across intersectionality profiles**

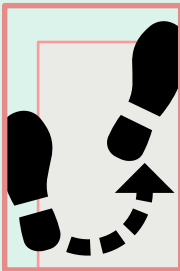
WP3 – Co-design of a public health resource



9 co-design sessions with young people and professionals in Kent, Leeds and Cornwall (3 in each region)



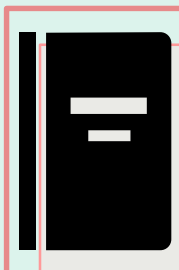
Key topics of invalidation and safe spaces



Creating a public health resource together, listening to what young people want

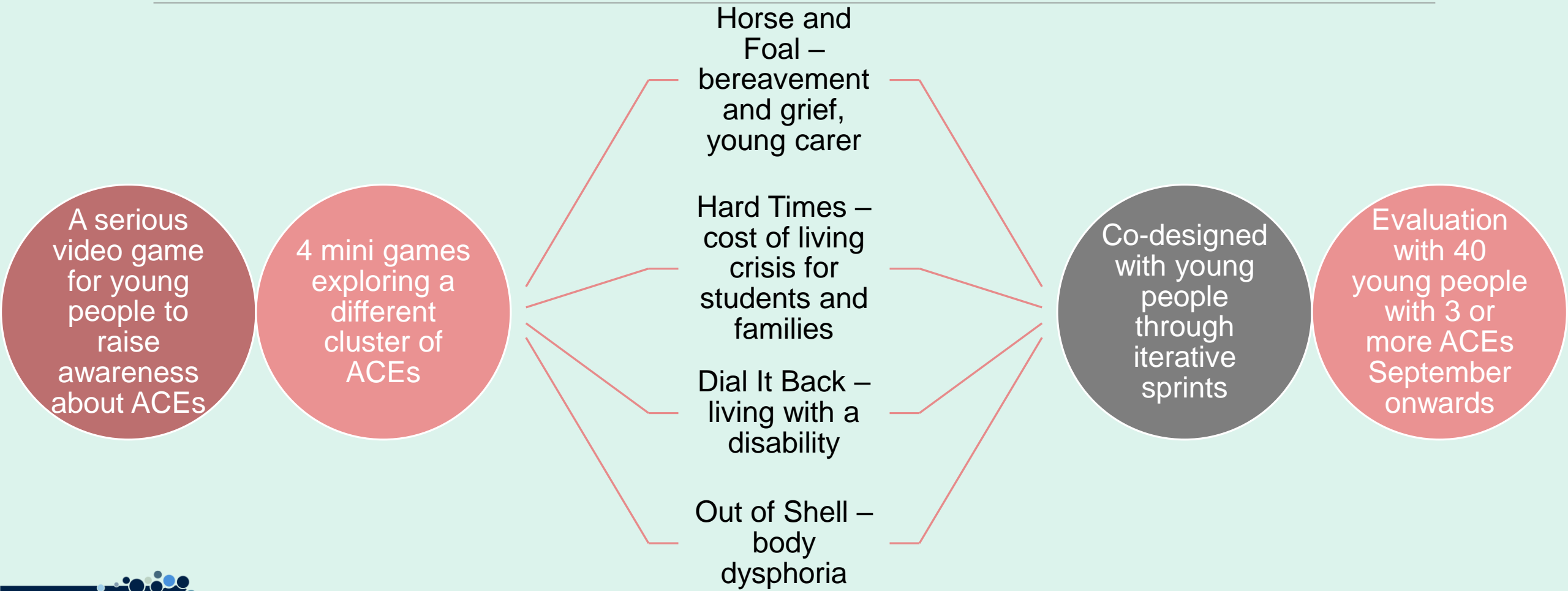


Resource currently being developed



Evaluation to take place July 2024 onwards

WORK PACKAGE 4





FALMOUTH
UNIVERSITY



Thank you for listening!



Centre for
Mental Health



University of
Kent

UNIVERSITY OF LEEDS

